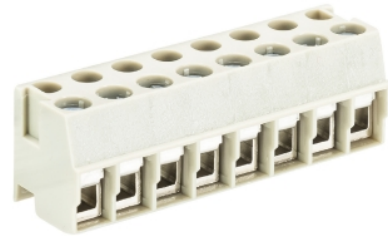


Data sheet

Commercial Art.No.: 25.600.2653.0

Pluggable PCB Terminal 8142 / 6

Pluggable-PCB terminal with screw connection with wire protection, 6 poles, printed version, max. cross section: 2.5 mm², pitch: 5 mm, type of packing: carton, color: grey



Certificates / Approvals



Technical data

General

Modular spacing	5 mm
Connection type	Screw connection
Soldering process	None
Packaging	Carton
Number of poles	6
Marking	Yes
Mating direction towards connector	90°

Technical data

Nominal cross section	2.5 mm ²
Rated current	8 A
Overvoltage Category I	1000 V
Overvoltage Category II	250 V
Overvoltage Category III	200
Rated impulse voltage	4 kV
Wire strip length	5 mm

Connection Data

Minimum cross section solid	0.14 mm ²
Maximum cross section solid	4 mm ²
Minimum cross section fine stranded	0.14 mm ²
Maximum cross section fine stranded	2.5 mm ²
Wire strip length	5 mm

Technical Data UL/CSA

Cross section UL	22-12 AWG
Voltage UL	300 V
Current field wiring	15 A
Current factory wiring	15 A
Cross section CSA	22-12 AWG
Voltage CSA	300 V

Current CSA	15 A
-------------	------

Other

Type of insulation material	Thermoplastic
Color	Grey
Height	13 mm
Length	30 mm
Depth	11.5 mm
Material attachment screw	Steel
Material contact base	CuSn
Material contact surface	Sn

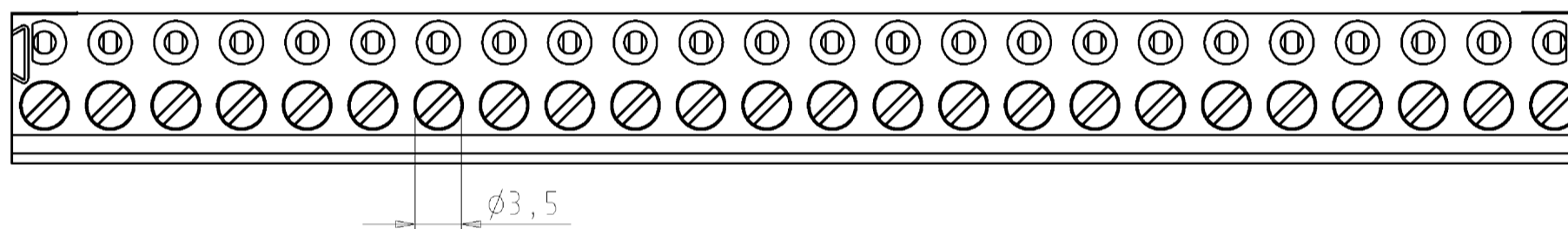
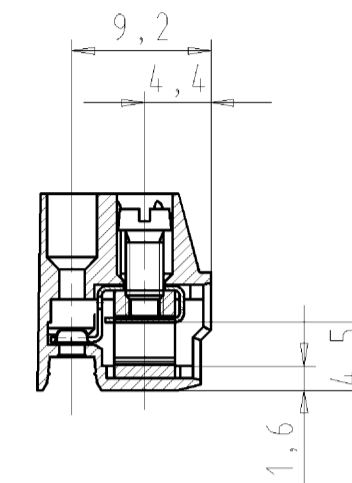
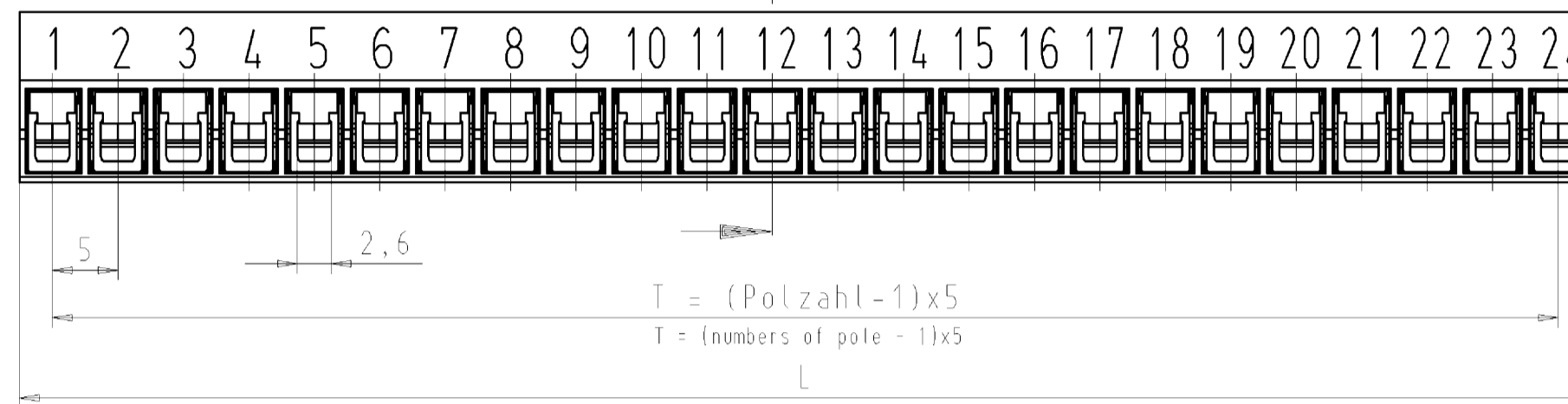
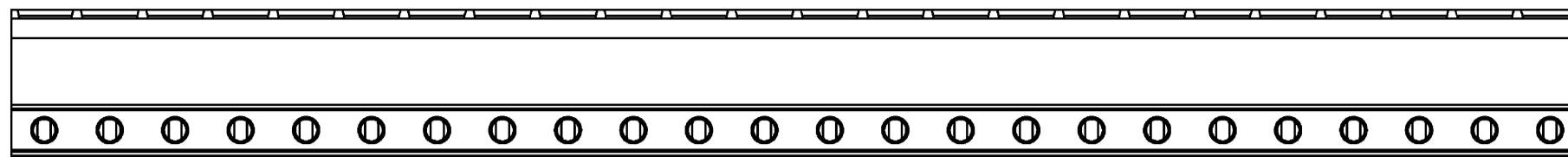
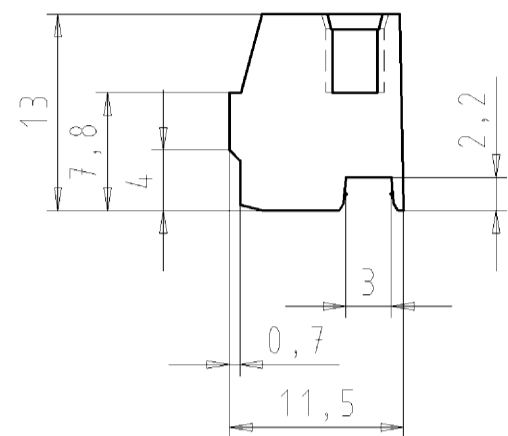
Classification

ECLASS 11	
ECLASS 8.1	27440402
ETIM 7.0	EC002637
ETIM 6.0	EC002637
ETIM 5.0	EC002637

Product compliance

ROHS conformity status	Compliant/Exempted
ROHS exceptions	III-6(c)
REACH-SVHC conformity status	Duty-To-Declare
REACH-SVHC substances	Lead
REACH-SVHC CAS numbers	7439-92-1

Gezeichnet/drawn:
25.600.4453.0



25.600.4453.F	8142/24	24	115	120
25.600.4353.F	8142/23	23	110	115
25.600.4253.F	8142/22	22	105	110
25.600.4153.F	8142/21	21	100	105
25.600.4053.F	8142/20	20	95	100
25.600.3953.F	8142/19	19	90	95
25.600.3853.F	8142/18	18	85	90
25.600.3753.F	8142/17	17	80	85
25.600.3653.F	8142/16	16	75	80
25.600.3553.F	8142/15	15	70	75
25.600.3453.F	8142/14	14	65	70
25.600.3353.F	8142/13	13	60	65
25.600.3253.F	8142/12	12	55	60
25.600.3153.F	8142/11	11	50	55
25.600.3053.F	8142/10	10	45	50
25.600.2953.F	8142/9	9	40	45
25.600.2853.F	8142/8	8	35	40
25.600.2753.F	8142/7	7	30	35
25.600.2653.F	8142/6	6	25	30
25.600.2553.F	8142/5	5	20	25
25.600.2453.F	8142/4	4	15	20
25.600.2353.F	8142/3	3	10	15
25.600.2253.F	8142/2	2	5	10
Teile-Nr. part-no.	Typ type	Polzahl pole	T	L

.F	Farbe/colour
.0	grau/grey
.1	schwarz/black
.9	orange/orange

Weitere Daten siehe Katalog
further data see catalog

Tolerierung Size ISO 14405/Tolerance system Size ISO 14405 (This ISO-standard describes the envelope principle. According to the envelope principle the deviations of form and parallelism are limited by the size tolerances).		ja/yes <input checked="" type="checkbox"/> Stoffverfalls- und Deklarationsliste nach UU-TQM-05/03 ist einzuhalten. Conformity with Wieland document UU-TQM-05/03 (list of prohibited / declarable hazardous substances) to be declared!
Freitoleranz nach DIN ISO 2768 - m	CAD - Zeichnung, keine manuellen Änderungen EAD - drawing, no manual modifications allowed	1. Verwendung: First Use: -
Blatt: 1 von 1 Sheet: 1 of 1	Zeichnung Nr./Drawing No. Index	
Werkstoff/Material		2012 Tag/Date Name
Maßstab/Scale		12.12. Deutsch T.
2:1		T 25.600.2253.0 01K
Maße in mm/Dimensions are in mm		
Vol. mm/Off./Surf. mm		Ersatz für/Replacement for: -
wieland		Type Benennung/Title
Elektrische Verbindungen		PLUGGABLE PCB TERMINAL LP_STECKKLEMME 2 - 24 polig/poles
Index Datum / Blatt Date / Sheet		s. Tabelle see table
Änderung/Revision		

Weitergabe sowie Vervielfältigung dieses Dokuments, Verwertung und Mitteilung seines Inhalts sind verboten, soweit nicht ausdrücklich gestattet. Die Reproduktion, Distribution und Utilization of this document as well as the communication of its contents to others without express authorization is prohibited.